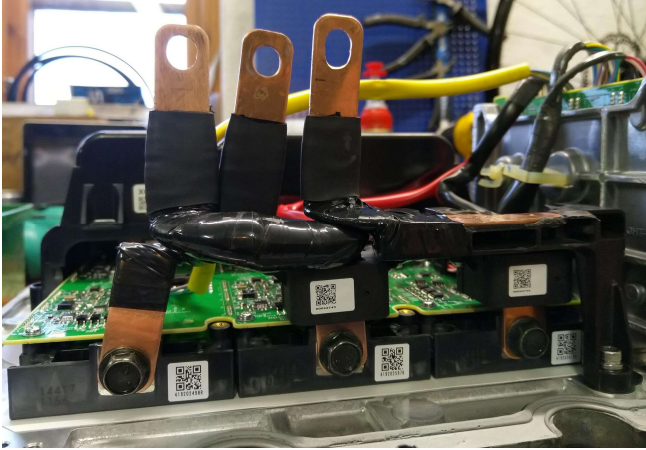
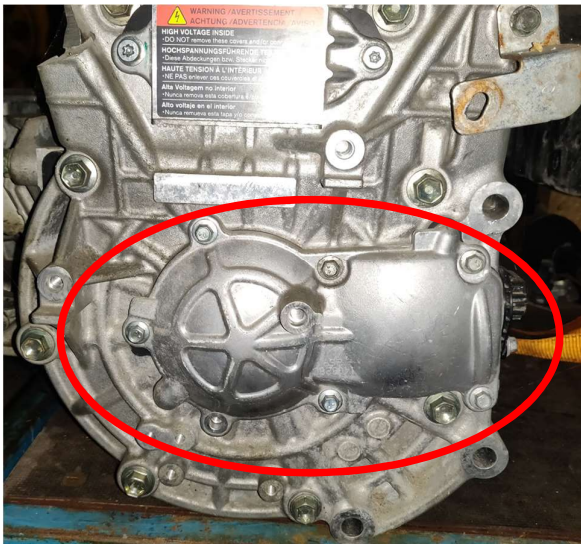


Changing driving direction



The motor has a max reverse speed of 40km/h, something Nissan decided. Forward originally is the same direction as the coolant inlet and outlet are facing on the motor. If you want to change this two things are necessary first you need to swap two of the phases from the inverter, the phase V and W. (The phase in the middle and the phase without a current sensor)



Secondly you need to change the wires to the Resolver (a type of encoder inside the motor, not the controller). The easiest way to do this is to open the protective housing on the motor circled in the picture to the left.

There you will find a cable that looks like the picture below, swap the grey wire with the white wire as I have done. And that's it!

