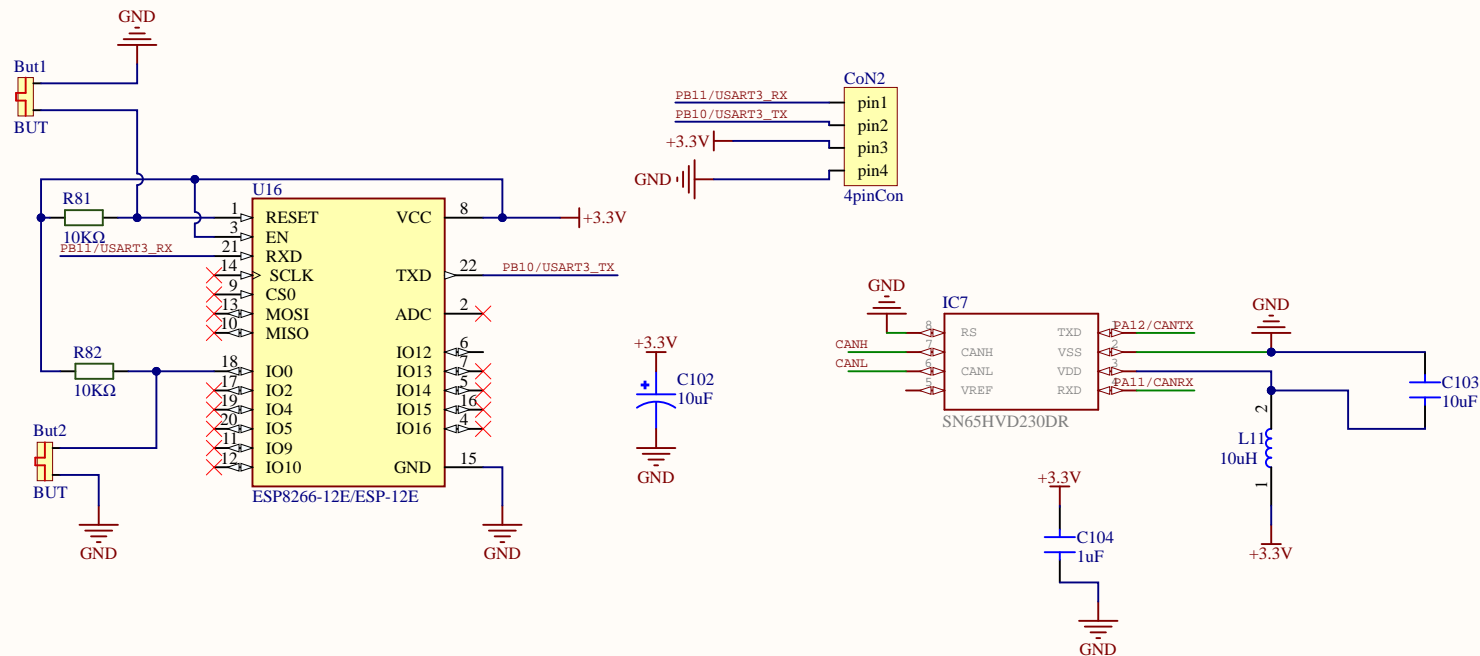
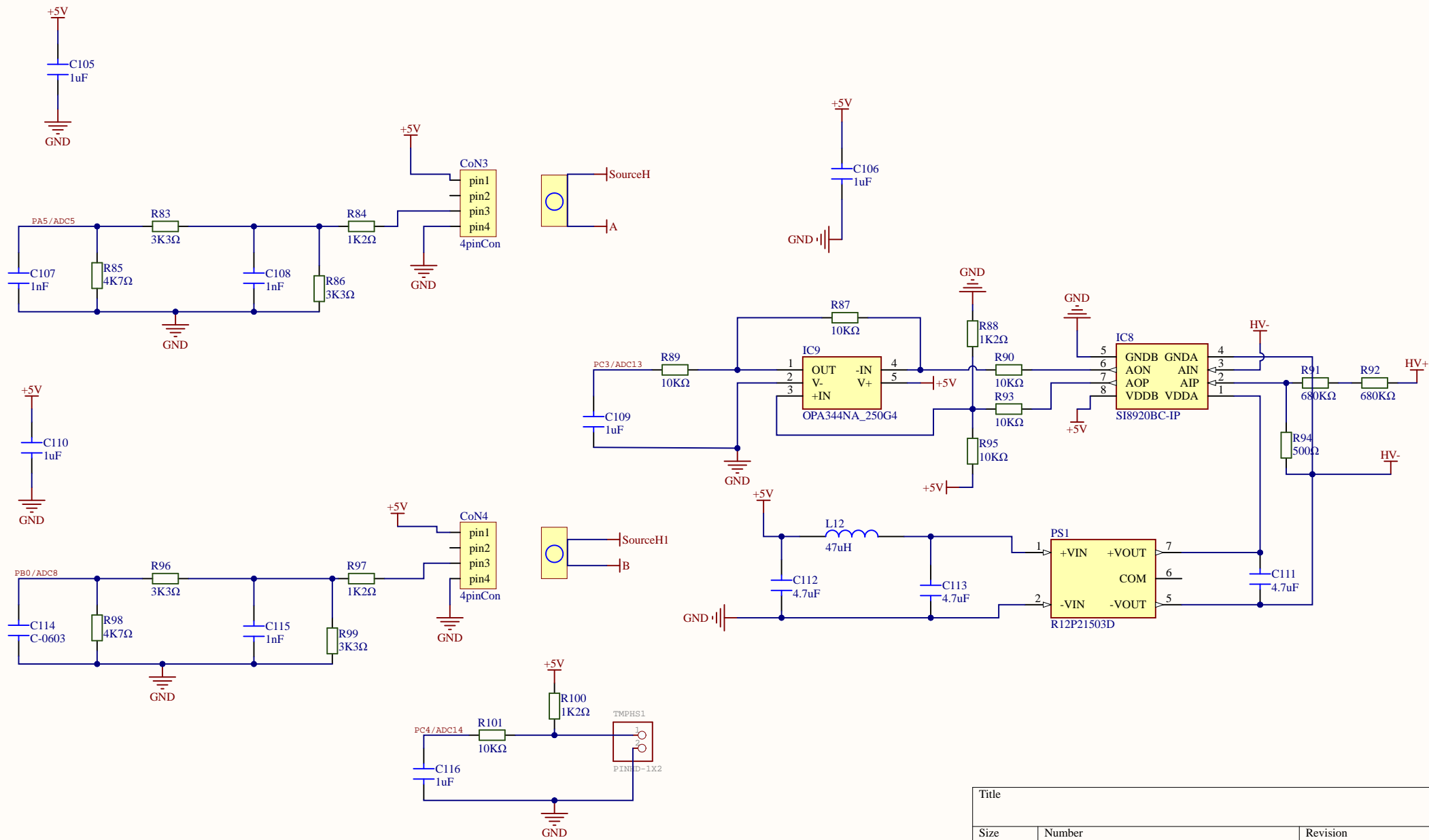


Title		
Size	Number	Revision
A4		
Date:	6/22/2022	Sheet of
File:	C:\Users\...\Automotive Connector.SchDoc	Drawn By:



Title		
Size	Number	Revision
A4		
Date:	6/22/2022	Sheet of
File:	C:\Users\...\Communication.SchDoc	Drawn By:



Title		
Size	Number	Revision
A4		
Date:	6/22/2022	Sheet of
File:	C:\Users\...\Current Voltage Sensors.SchDoc	Drawn By:

A

B

C

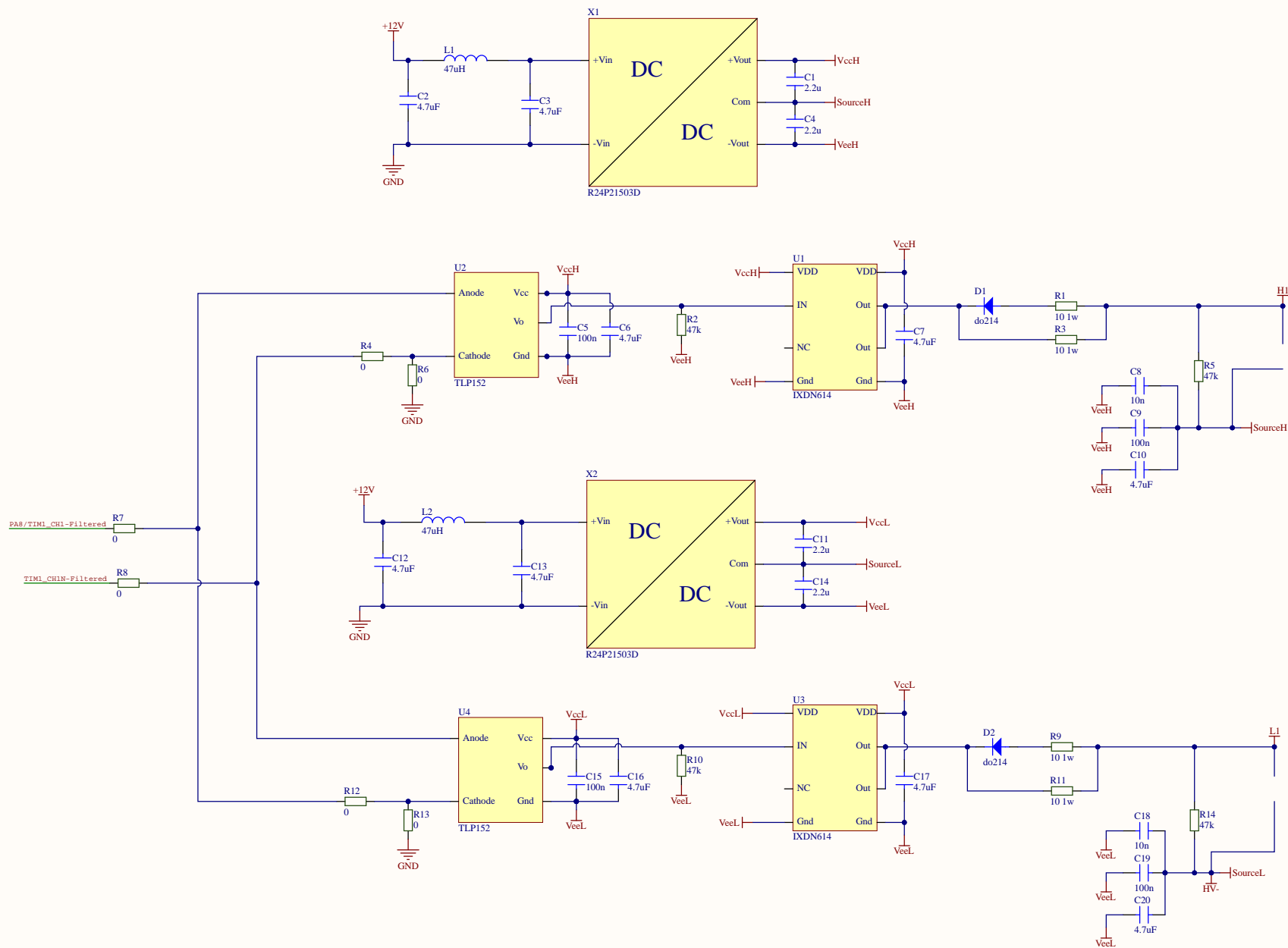
D

A

B

C

D



Title Gate Driver Board		
Size A3	Number Gate Driver Board Version 1.0	Revision V 1.0
Date: 6/22/2022	Sheet of 1	
File: C:\Users\...Gate Driver 1.SchDoc	Drawn By: Halil Tepedelen	

A

B

C

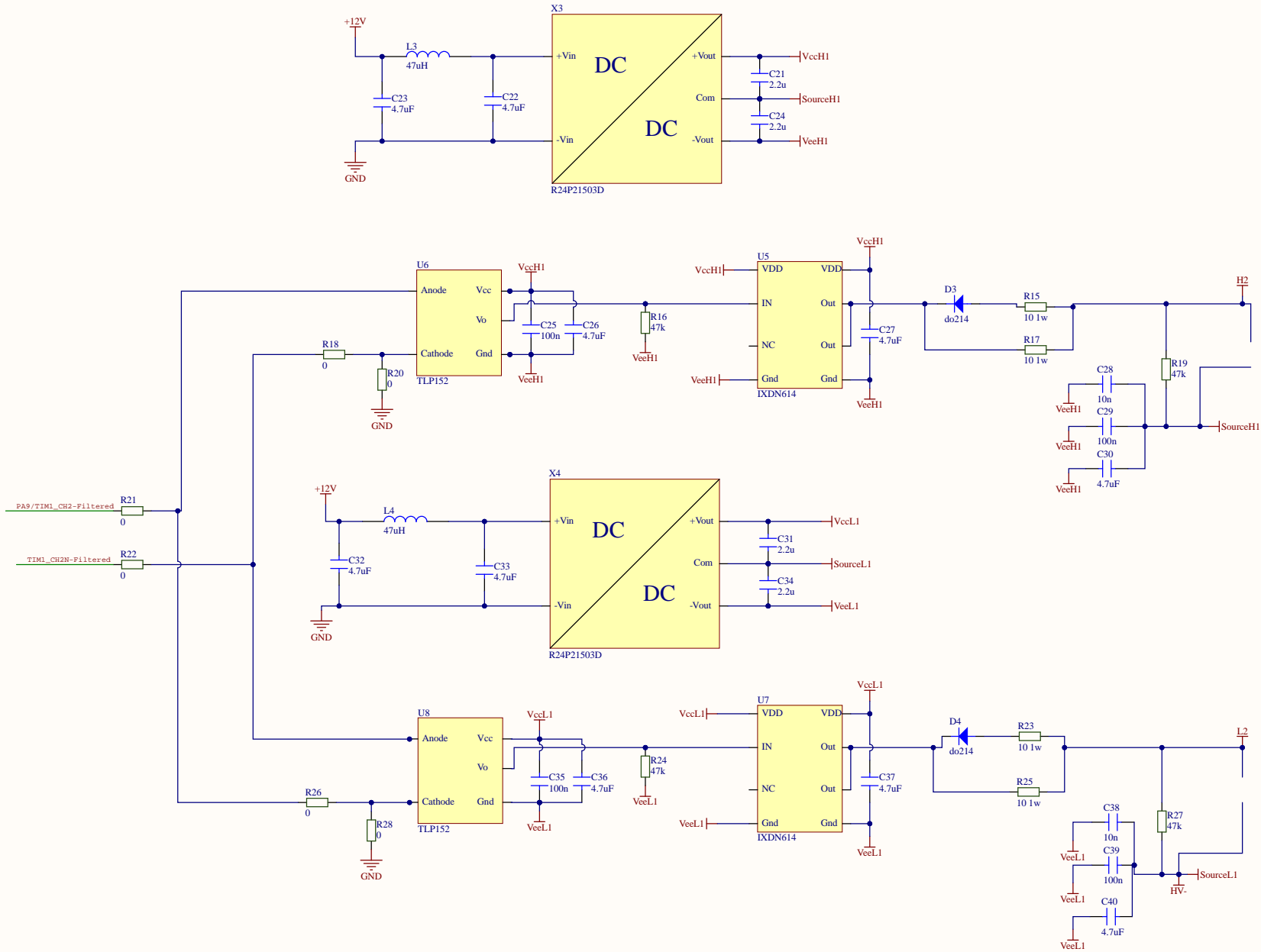
D

A

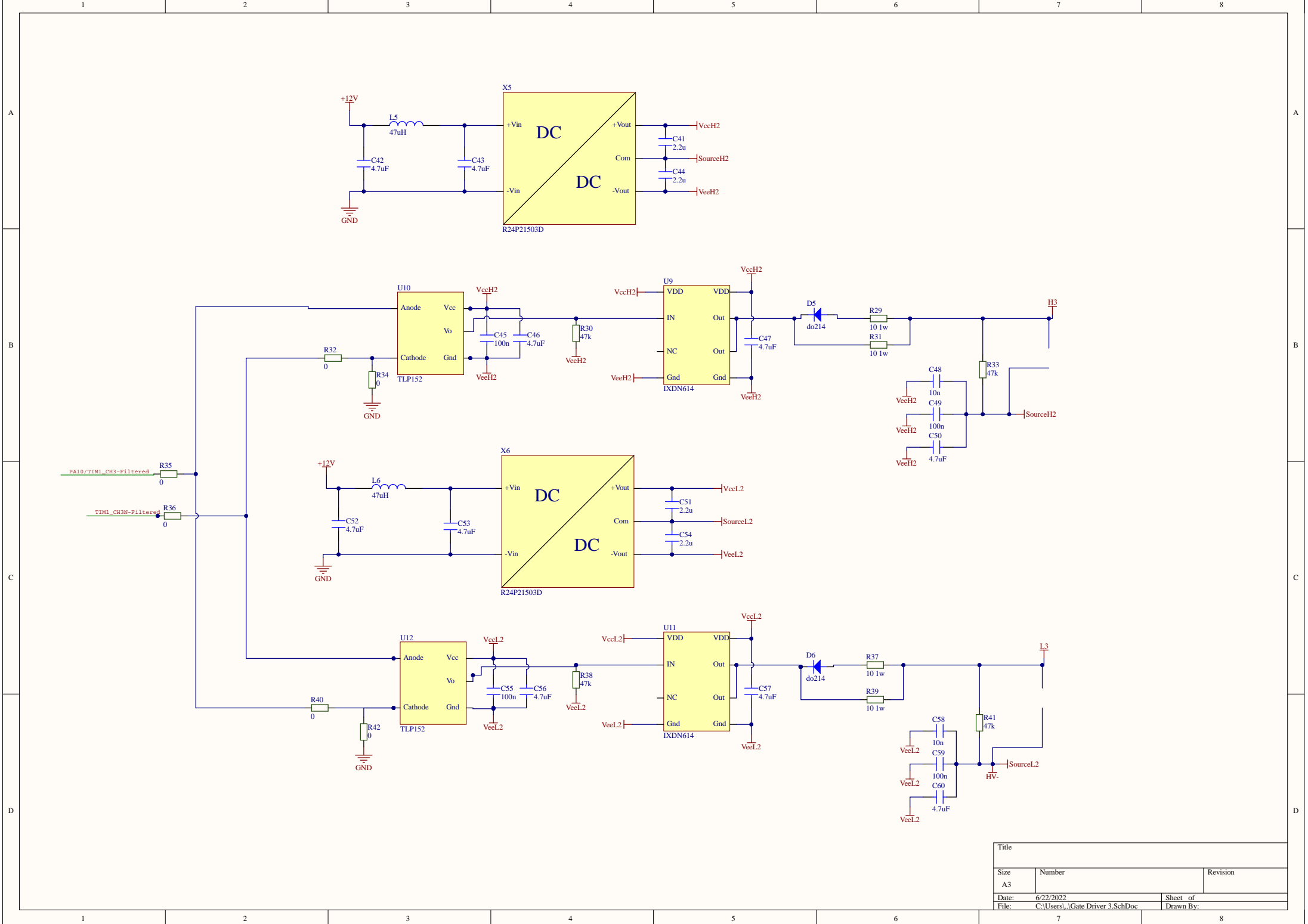
B

C

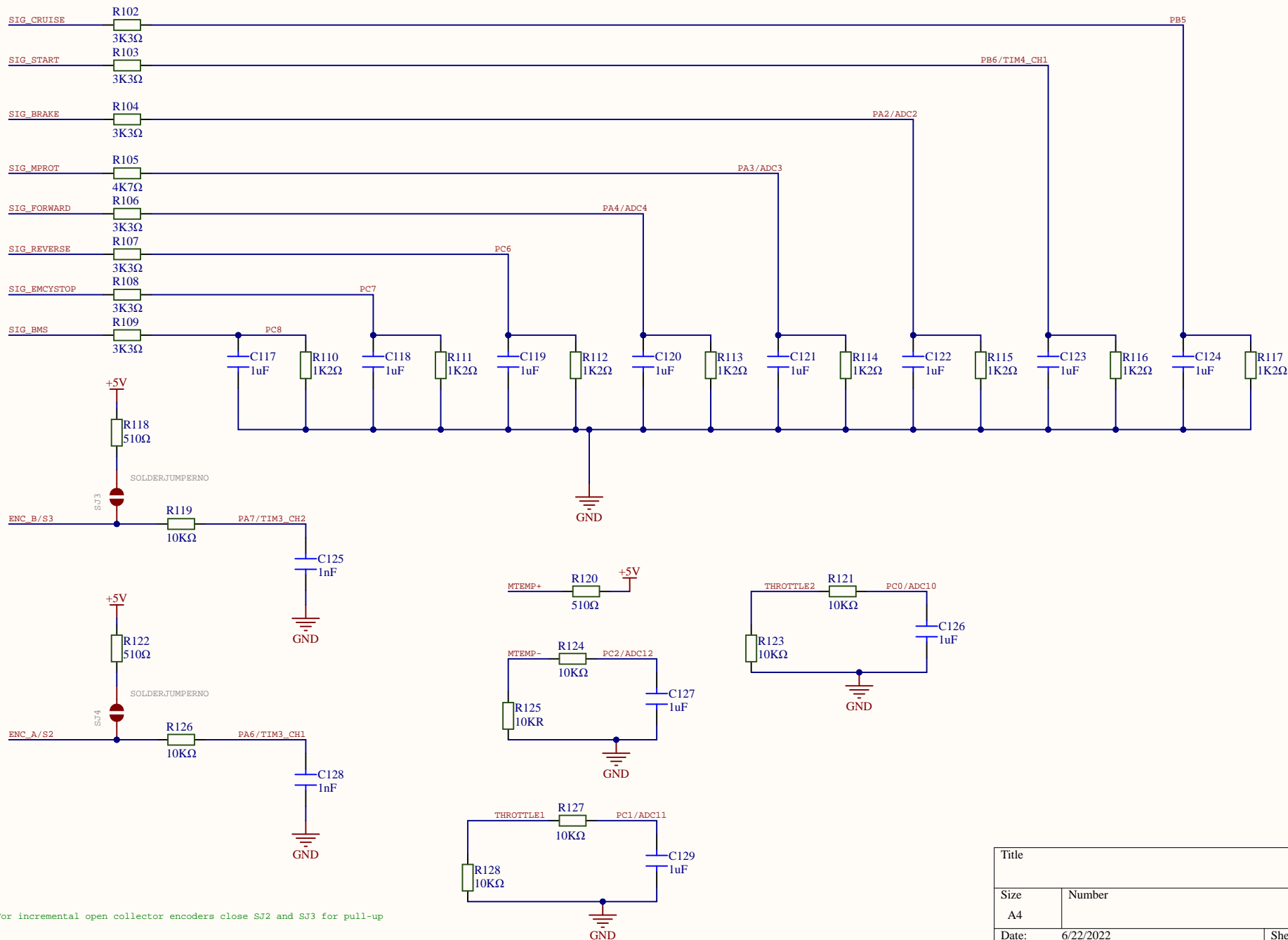
D



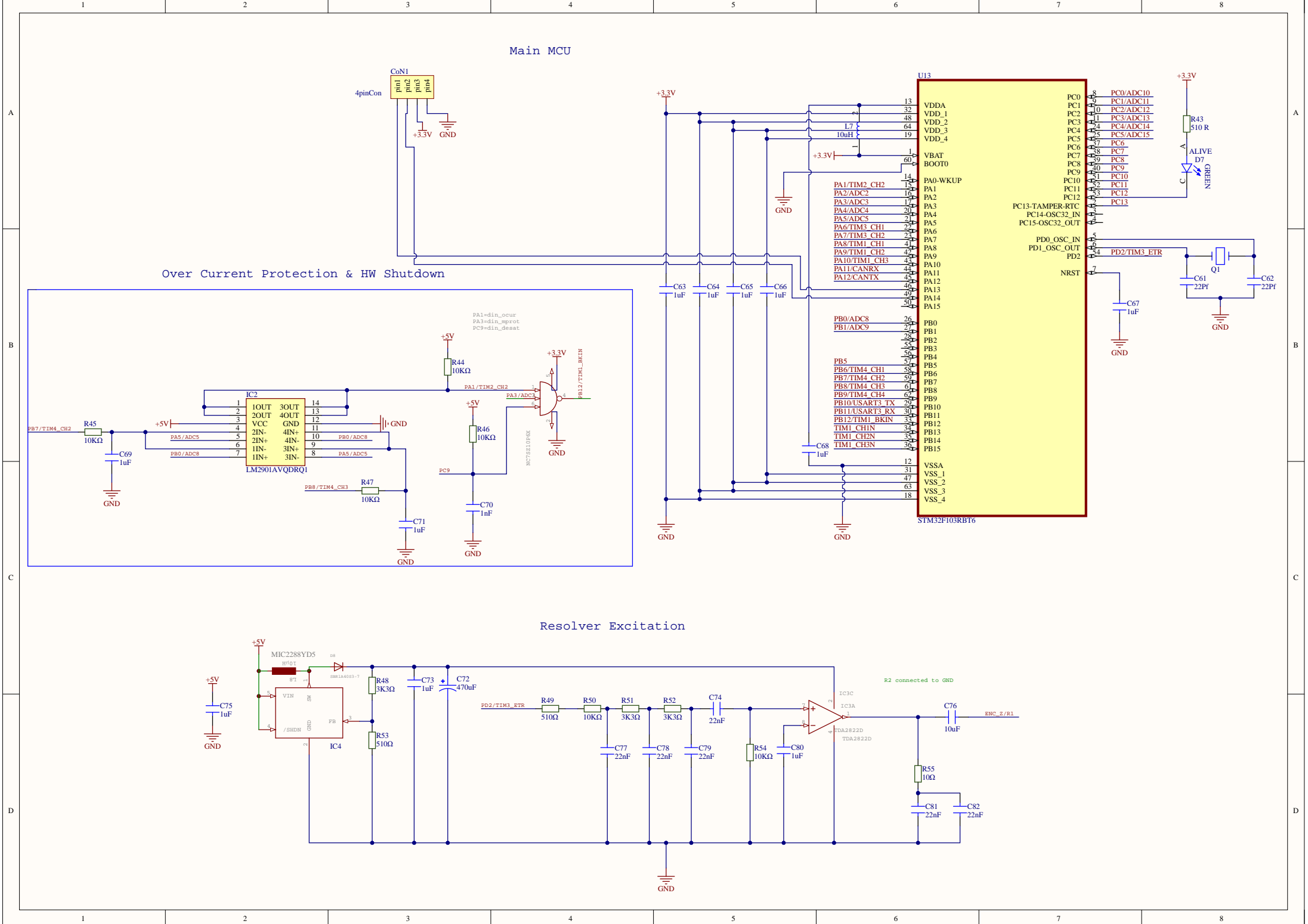
Title		
Size A3	Number	Revision
Date:	6/22/2022	Sheet of
File:	C:\Users\...\Gate Driver 2.SchDoc	Drawn By:



Title		
Size A3	Number	Revision
Date: 6/22/2022	Sheet of	
File: C:\Users\...\Gate Driver 3.SchDoc	Drawn By:	



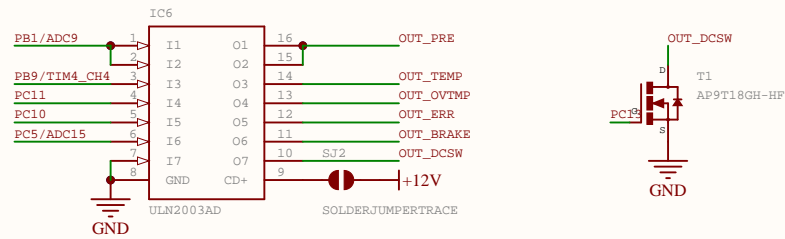
Title		
Size	Number	Revision
A4		
Date:	6/22/2022	Sheet of
File:	C:\Users\...\Input Filtering.SchDoc	Drawn By:





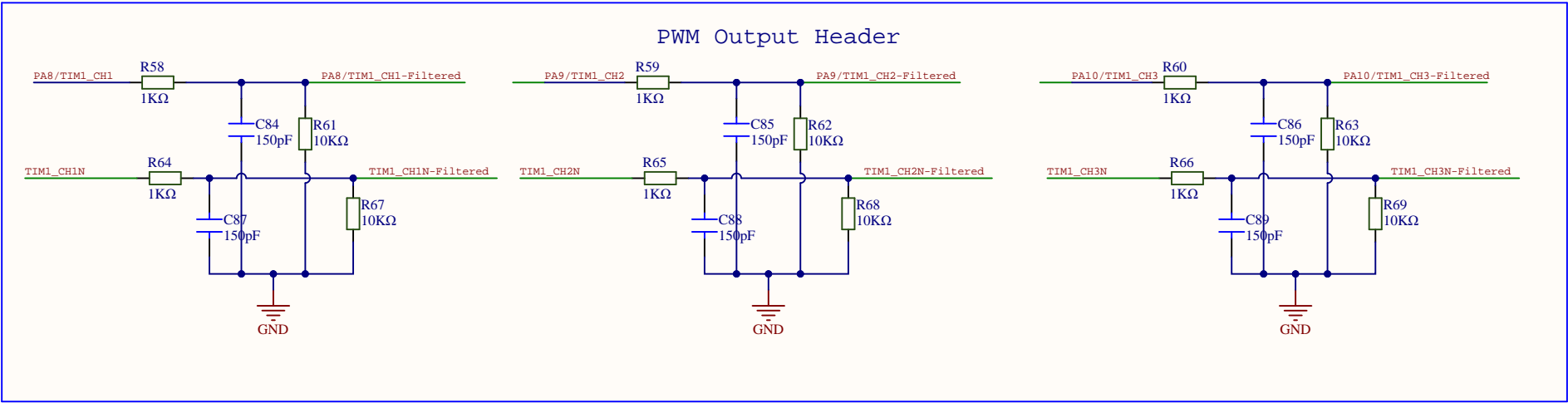


## Output driver



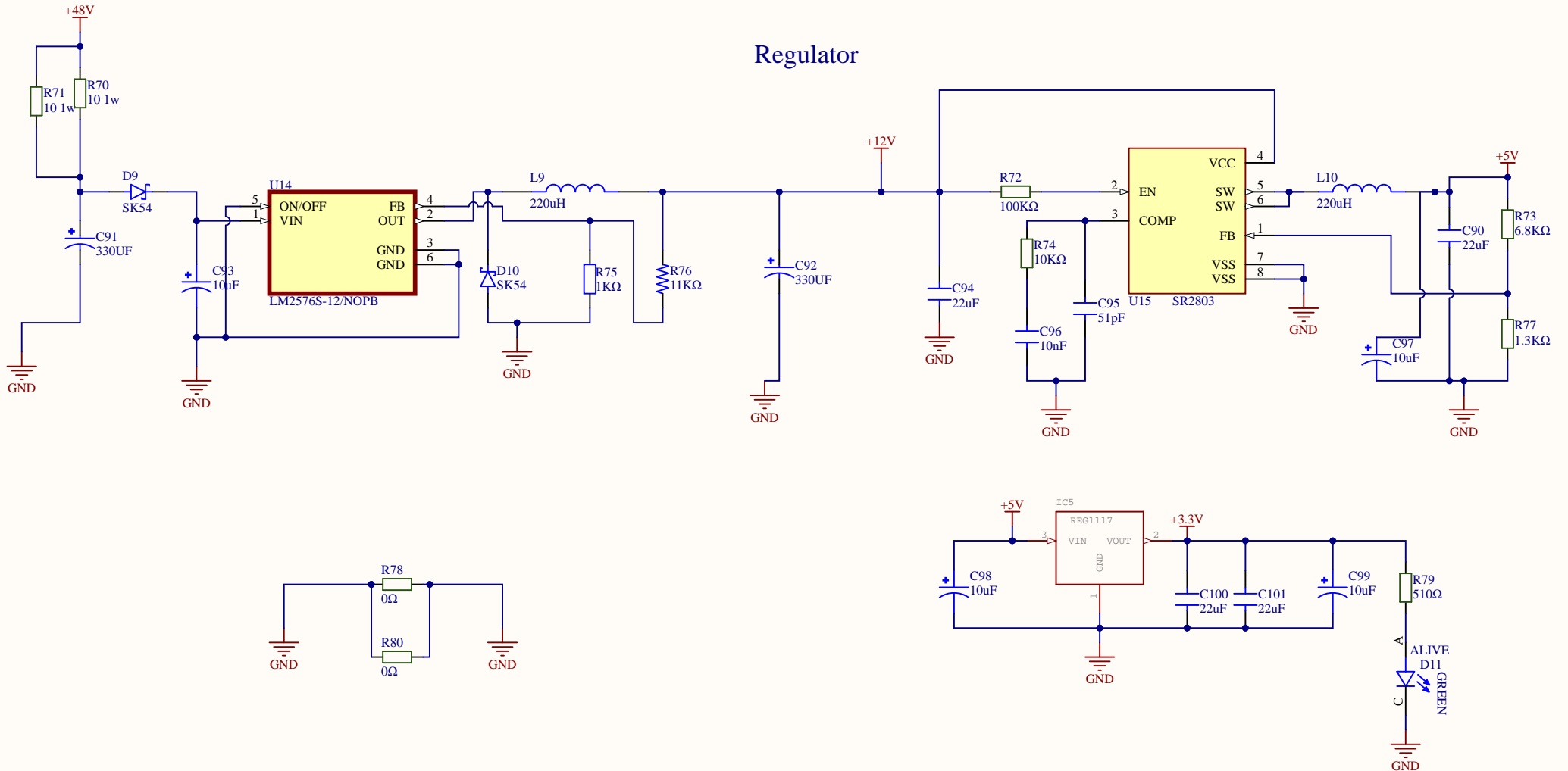
Ideally use the same 12V line for your relays and board power  
 CUT SJ1 for disabling internal flyback diodes when using another 12V line

Title			
Size	Number		Revision
A4			
Date:	6/22/2022		Sheet of
File:	C:\Users\...\Output Driver.SchDoc		Drawn By:



Title		
Size	Number	Revision
A4		
Date:	6/22/2022	Sheet of
File:	C:\Users\...\PWM Filter.SchDoc	Drawn By:

# Regulator



Title		
Size	Number	Revision
A4		
Date:	6/22/2022	Sheet of
File:	C:\Users\...\Voltage Regulation.SchDoc	Drawn By: