



**GSP AUTO PARTS**

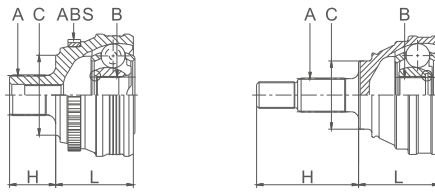
CAT.NO.31019/D

# DRIVE SHAFTS & CONSTANT VELOCITY JOINT KITS FOR ELECTRIC & HYBRID VEHICLE

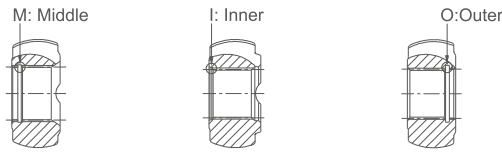


# 01

## Outer C.V. Joints

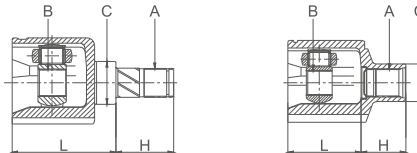


A: External Teeth, wheel side  
B: Internal Teeth, wheel side  
C: Seal Diameter [mm]  
H: Bell pin length  
L: Length  
ABS: Number of teeth on ABS ring  
I: Groove type: Inner  
M: Groove type: Middle  
O: Groove type: Outer  
P: Groove position

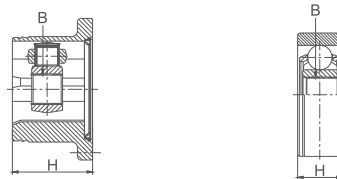


# 02

## Inner C.V. Joints

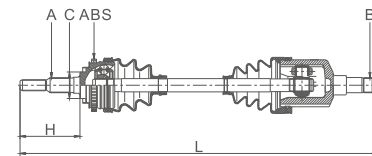


A: External Teeth, diff.side  
B: Internal Teeth, diff.side  
C: Seal Diameter [mm]  
H: Bell pin length  
L: Length

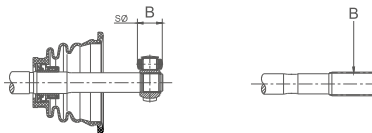


# 03

## Drive Shafts

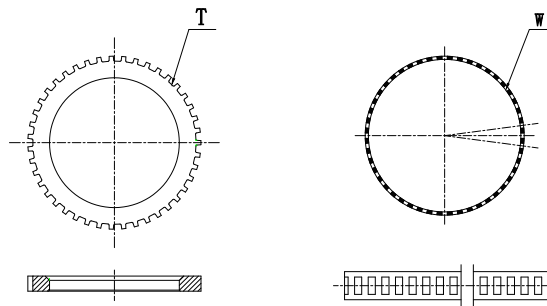


A: External Teeth, wheel side  
B: External Teeth, diff.side/  
Tripod roller Diameter  
C: Seal Diameter [mm]  
H: Bell pin length(wheel side)  
L: Length  
ABS: Number of teeth on ABS ring



# 04

## ABS Type

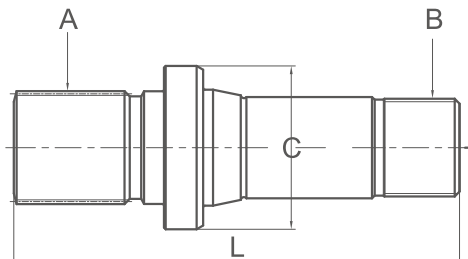


T Type  
W Type



# 05

## Stub Shaft

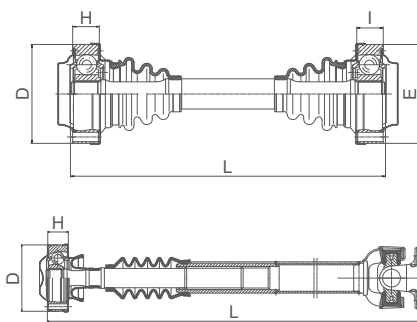


A: External Teeth, wheel side  
B: External Teeth, diff.side  
C: Seal Diameter [mm]  
L: Length



# 06

## Prop Shaft



L:Length [mm]  
D:Joint Diameter [mm]  
E:Joint Diameter [mm]  
H:Length [mm]  
I:Length [mm]

---

MT/AT: Manual and Automatic integrated

L/R: Left/Right  
F/R: Front/Rear

GSP No.	ABS	A	B	C	H	L	P	Product group
201122	44NS	36	32	56.2	49.5	592		Drive Shaft
201123		21	18	47.8	79	467		Drive Shaft
201167	48T	30	28	73	94.5	656		Drive Shaft
201168	48T	30	28	73	94.5	594		Drive Shaft
201529		42		76.5	34	498		Drive Shaft
201530		42		59	34	496		Drive Shaft
201698		30	29	63	120	773		Drive Shaft
201699		30	29	63	120	868		Drive Shaft
201700		30	29	63	120	793		Drive Shaft
201701		30	27	63	120	715		Drive Shaft
201702		30	27	63	120	735		Drive Shaft
201703		27	29			248		Stub Axle
201785		28	27	59.5	94.5	671		Drive Shaft
201786		28	27	59.5	94.5	949		Drive Shaft
201927		36		59.5	40	665		Drive Shaft
201929		25	23	48	106	876		Drive Shaft
201930		25	23	48	106	710		Drive Shaft
201985		36	37	59.5	40	546		Drive Shaft
202135		26	25	58	78.5	601		Drive Shaft
202318		26	24	55.6	95.5	949		Drive Shaft
202319		26	24	55.6	95.5	650		Drive Shaft
202320		26	20	55.6	95	632		Drive Shaft
202329		27	28	60	95	587		Drive Shaft
202330		27	28	60	95	553		Drive Shaft
202347		26	27	58	78.5	537		Drive Shaft
202435		26	20	55.6	95	914		Drive Shaft
203382		42		76.5	34	495		Drive Shaft
205043		30	27	64.8	86.5	1020		Drive Shaft
205052		30	27	64.8	86.5	634		Drive Shaft
205066		28	27	57.4	71	739		Drive Shaft
205067		28	27	57.4	71	793		Drive Shaft
205114		30	27	65	77	767		Drive Shaft
205115		30	27	65	77	823		Drive Shaft
224496	48T	30	27	73	95	976		Drive Shaft
224497	48T	30	27	73	95	672		Drive Shaft
235085		30		64.4	103.5	525		Drive Shaft
241493		29	25	56.2	102	758		Drive Shaft
241494		29	25	56.2	102	871		Drive Shaft
250614		27	26	56.7	91	680		Drive Shaft
250616		27	23	56.7	91	816		Drive Shaft
259377		26	24	55.6	95.5	623.5		Drive Shaft
259378		26	24	55.6	95.5	973		Drive Shaft
259380	48T	26	20	58	95.5	671		Drive Shaft
259639		26	24	55.6	95.5	624		Drive Shaft
259640		26	24	55.6	95.5	973		Drive Shaft
259673		26	24	61.2	96.5	625		Drive Shaft
259674		26	24	61.2	96.5	973		Drive Shaft
259685		30	24	61.2	100	985		Drive Shaft
261298		30	37	64	103.5	863		Drive Shaft
262123		40	28	57.5	52	994		Drive Shaft
262125		40	31	57.5	52	529		Drive Shaft
601057		32	30	36	56	100		Inner Joint
601096		28	33	42		129		Inner Joint
601158		37	34	34.5	65.5	83		Inner Joint
601160		30	29	64	103.5	64		Inner Joint
601161		37	29	44.95	79.5	80		Inner Joint
601465		29	35	44	72.5	118		Inner Joint
601466		29	35	44	72.5	130		Inner Joint
601467		27	35	45.7		144		Inner Joint

GSP No.	ABS	A	B	C	H	L	P	Product group
601511		27	32	41	62.5	89		Inner Joint
601548		23	24	35	50	88		Inner Joint
603022			34		88			Inner Joint
605014		27	26	29.97	448	121		Inner Joint
605030		27	26	43.9	62	121		Inner Joint
605020		27	25	43.9	75	72		Inner Joint
605038		28	25	57.4	71	62		Inner Joint
605063		30	28	65	77	62		Inner Joint
605064		27	28	44	80	75		Inner Joint
623036		25	28	35	58	95		Inner Joint
623059		27	28	40		119.5		Inner Joint
624056		27	25	30	67	83.5		Inner Joint
624140		28	33	33	67	105.5		Inner Joint
624141		27	33	30	67	95.5		Inner Joint
641175		25	24	40	63	105.5		Inner Joint
641176		25	24	33	188	93		Inner Joint
650040		26	30	43	42.5	83		Inner Joint
650041		23	30	35	173	94		Inner Joint
659077		20	23	35	63.5	115.7		Inner Joint
659094		24	25	50	67	105		Inner Joint
659095		24	25	40	98	93		Inner Joint
659206		24	27	40	377	104.5		Inner Joint
659227		24	25	50	67	109.5		Inner Joint
659228		24	25	40	98	93		Inner Joint
659236		20	23	35	63.5	121		Inner Joint
661069			28		32			Inner Joint
662034		31	27	36.2	68	90		Inner Joint
662066		28	27	33	520	103		Inner Joint
699148			28		34			Inner Joint
801064	48T	30	36	73	94.5	67.5	I	Outer Joint
801347	44NS	36	30	56.2	49.5	62.5	I	Outer Joint
801487		30	35	63	120	59.5	I	Outer Joint
801524		28	32	59.5	94.5	59.5	I	Outer Joint
803087		42	27	76.5	34	57	M	Outer Joint
803088		42	29	76.5	34	61.5	M	Outer Joint
803101		36	27	59.5	40	65	M	Outer Joint
803102		42	29	76.5	34	60	I	Outer Joint
805006		30	33	64.8	86.5	59.5	M	Outer Joint
823066		26	28	58	78.5	51	M	Outer Joint
823260		26	29	58	78	52	M	Outer Joint
824090	48T	27	25	61.9	95	61	M	Outer Joint
824299	48T	30	25	73	95	61.5	M	Outer Joint
835045		30	28	64.4	103.5	62.5	I	Outer Joint
850150		27	32	56.7	91	61	I	Outer Joint
859037	48T	26	23	58	95.5	61	M	Outer Joint
859244		26	25	55.6	95.5	57	I	Outer Joint
859270		26	24	55.6	95	56	M	Outer Joint
859340		26	25	55.6	95.5	57	I	Outer Joint
859528		26	32	61.2	96.5	54.5	I	Outer Joint
862053		40	27	57.5	52	60.5	I	Outer Joint
899320		30	27	61.2	100	64	I	Outer Joint

Manufacturer	Model	Displacement	From	To	Transm	F/R	L/R	Remarks	Product group	GSP No.
AUDI	A3 (8VA, 8VF)	1.4 TFSI e-tron (110 kW)	2014.05-	-	AT	F	L	Engine CUKB, CXUA	Drive Shaft	201985
AUDI	A3 (8VA, 8VF)	1.4 TFSI e-tron (110 kW)	2014.05-	-	AT	F	L	Engine CUKB, CXUA	Inner Joint	601158
AUDI	A3 (8VA, 8VF)	1.4 TFSI e-tron (110 kW)	2014.05-	-	AT	F	L	Engine CUKB, CXUA	Outer Joint	803101
AUDI	A6 (4G2, 4GC, C7)	2.0 TFSI hybrid (155 kW)	2011.11-	-	AT	F	L/R	Engine CHJA	Drive Shaft	201529
AUDI	A6 (4G2, 4GC, C7)	2.0 TFSI hybrid (155 kW)	2011.11-	-	AT	F	L	Engine CHJA	Inner Joint	603022
AUDI	A6 (4G2, 4GC, C7)	2.0 TFSI hybrid (155 kW)	2011.11-	-	AT	F	L/R	Engine CHJA	Outer Joint	803088
AUDI	A6 IV (4G2, 4G5), AVANT	2.0 TFSI hybrid (155 kW)	2011.11-	-	AT	F	L/R	Engine CHJA	Drive Shaft	201529
AUDI	A6 IV (4G2, 4G5), AVANT	2.0 TFSI hybrid (155 kW)	2011.11-	-	AT	F	L	Engine CHJA	Inner Joint	603022
AUDI	A6 IV (4G2, 4G5), AVANT	2.0 TFSI hybrid (155 kW)	2011.11-	-	AT	F	L/R	Engine CHJA	Outer Joint	803088
AUDI	A8 (4H2, 4H8, 4HC, 4HL)	2.0 TFSI hybrid (155 kW)	2012.02-	-	AT	F	L/R	Engine CHJA	Drive Shaft	203382
AUDI	A8 (4H2, 4H8, 4HC, 4HL)	2.0 TFSI hybrid (155 kW)	2012.02-	-	AT	F	L/R	Engine CHJA	Outer Joint	803102
AUDI	Q5 (8RB)	2.0 TFSI hybrid (155 kW)	2011.06-	-	AT	F	L/R	AWD Engine CHJA	Drive Shaft	201530
AUDI	Q5 (8RB)	2.0 TFSI hybrid (155 kW)	2011.06-	-	AT	F	L	AWD Engine CHJA	Inner Joint	603022
AUDI	Q5 (8RB)	2.0 TFSI hybrid (155 kW)	2011.06-	-	AT	F	L/R	AWD Engine CHJA	Outer Joint	803087
BMW	3 (F30)	2.0 hybrid (185kW)	2015-	-	AT	R	L	-	Drive Shaft	205066
BMW	3 (F30)	2.0 hybrid (185kW)	2015-	-	AT	R	R	-	Drive Shaft	205067
BMW	3 (F30)	2.0 hybrid (185kW)	2015-	-	AT	R	L/R	-	Inner Joint	605020
BMW	3 (F30)	2.0 hybrid (185kW)	2015-	-	AT	R	L/R	-	Outer Joint	605038
BMW	5 (F10)	ActiveHybrid (250 kW)	2011.12-	2016.08	AT	R	L	Engine N55 B30 A	Drive Shaft	205114
BMW	5 (F10)	ActiveHybrid (250 kW)	2011.12-	2016.08	AT	R	R	Engine N55 B30 A	Drive Shaft	205115
BMW	5 (F10)	ActiveHybrid (250 kW)	2011.12-	2016.08	AT	R	L/R	Engine N55 B30 A	Inner Joint	605064
BMW	5 (F10)	ActiveHybrid (250 kW)	2011.12-	2016.08	AT	R	L/R	Engine N55 B30 A	Outer Joint	605063
BMW	X6 (E71, E72)	ActiveHybrid (300 kW)	2009.01-	2011.10	AT	F	L	AWD Engine N63 B44 A	Drive Shaft	205052
BMW	X6 (E71, E72)	ActiveHybrid (300 kW)	2009.01-	2011.10	AT	F	R	AWD Engine N63 B44 A	Drive Shaft	205043
BMW	X6 (E71, E72)	ActiveHybrid (300 kW)	2009.01-	2011.10	AT	F	L	AWD Engine N63 B44 A	Inner Joint	605030
BMW	X6 (E71, E72)	ActiveHybrid (300 kW)	2009.01-	2011.10	AT	F	R	AWD Engine N63 B44 A	Inner Joint	605014
BMW	X6 (E71, E72)	ActiveHybrid (300 kW)	2009.01-	2011.10	AT	F	L/R	AWD Engine N63 B44 A	Outer Joint	805006
BMW	X6 (E71, E72)	ActiveHybrid (357 kW)	2009.01-	2011.10	AT	F	L	AWD Engine N63 B44 A	Drive Shaft	205052
BMW	X6 (E71, E72)	ActiveHybrid (357 kW)	2009.01-	2011.10	AT	F	R	AWD Engine N63 B44 A	Drive Shaft	205043
BMW	X6 (E71, E72)	ActiveHybrid (357 kW)	2009.01-	2011.10	AT	F	L	AWD Engine N63 B44 A	Inner Joint	605030
BMW	X6 (E71, E72)	ActiveHybrid (357 kW)	2009.01-	2011.10	AT	F	R	AWD Engine N63 B44 A	Inner Joint	605014
BMW	X6 (E71, E72)	ActiveHybrid (357 kW)	2009.01-	2011.10	AT	F	L/R	AWD Engine N63 B44 A	Outer Joint	805006
HONDA	CIVIC VIII (FD, FA)	1.3 Hybrid (70 kW)	2006.01-	-	CVT	F	L	Engine LDA2	Drive Shaft	202135
HONDA	CIVIC VIII (FD, FA)	1.3 Hybrid (70 kW)	2006.01-	-	CVT	F	R	Engine LDA2	Drive Shaft	202347
HONDA	CIVIC VIII (FD, FA)	1.3 Hybrid (70 kW)	2006.01-	-	CVT	F	L	Engine LDA2	Inner Joint	623036
HONDA	CIVIC VIII (FD, FA)	1.3 Hybrid (70 kW)	2006.01-	-	CVT	F	R	Engine LDA2	Inner Joint	623059
HONDA	CIVIC VIII (FD, FA)	1.3 Hybrid (70 kW)	2006.01-	-	CVT	F	L/R	Engine LDA2	Outer Joint	823066
HONDA	CIVIC VIII (FD, FA)	1.3 Hybrid (85 kW)	2010.01-	2012.02	CVT	F	L	Engine LDA2	Drive Shaft	202135
HONDA	CIVIC VIII (FD, FA)	1.3 Hybrid (85 kW)	2010.01-	2012.02	CVT	F	R	Engine LDA2	Drive Shaft	202347
HONDA	CIVIC VIII (FD, FA)	1.3 Hybrid (85 kW)	2010.01-	2012.02	CVT	F	R	Engine LDA2	Inner Joint	623059
HONDA	CIVIC VIII (FD, FA)	1.3 Hybrid (85 kW)	2010.01-	2012.02	CVT	F	R	Engine LDA2	Outer Joint	823066
HONDA	CR-Z (ZF)	1.5 Hybrid (84 kW)	2010.06-	-	CVT	F	L/R	Engine LEA1	Outer Joint	823260
HONDA	CR-Z (ZF)	1.5 Hybrid (89 kW)	2012.11-	-	CVT	F	L/R	Engine LEA1, LEA3	Outer Joint	823260
HYUNDAI	IONIQ	1.6 GDI Hybrid (104 kW)	2016.03-	-	AT	F	R	-	Drive Shaft	202330
HYUNDAI	IONIQ (AE)	1.6 GDI Hybrid (104 kW)	2016.03-	-	AT	F	L	-	Drive Shaft	202329
KIA	OPTIMA/K5	2.0 CVVT Hybrid (110 kW)	2012.03-	-	AT	F	L/R	Engine G4NE	Inner Joint	624056
KIA	OPTIMA/K5	2.0 CVVT Hybrid (110 kW)	2012.03-	-	AT	F	L/R	Engine G4NE	Outer Joint	824090
KIA	OPTIMA/K5	2.0 CVVT Hybrid (140 kW)	2012.12-	-	AT	F	L/R	Engine G4NE	Inner Joint	624056
KIA	OPTIMA/K5	2.0 CVVT Hybrid (140 kW)	2012.12-	-	AT	F	L/R	Engine G4NE	Outer Joint	824090
KIA	OPTIMA/K5	2.0 GDI Hybrid (115 kW)	2016.09-	-	AT	F	L	Engine G4NG	Drive Shaft	201167
KIA	OPTIMA/K5	2.0 GDI Hybrid (115 kW)	2016.09-	-	AT	F	R	Engine G4NG	Drive Shaft	201168
KIA	OPTIMA/K5	2.0 GDI Hybrid (115 kW)	2016.09-	-	AT	F	L	Engine G4NG	Inner Joint	624140
KIA	OPTIMA/K5	2.0 GDI Hybrid (115 kW)	2016.09-	-	AT	F	R	Engine G4NG	Inner Joint	601096





Manufacturer	Model	Displacement	From	To	Transm	F/R	L/R	Remarks	Product group	GSP No.
TESLA	MODEL X	ALL	2014-	-	AT	F	R	-	Drive Shaft	201702
TESLA	MODEL X	ALL	2014-	-	AT	F	L/R	-	Stub Axle	201703
TESLA	MODEL X	ALL	2014-	-	AT	F	L	-	Inner Joint	601465
TESLA	MODEL X	ALL	2014-	-	AT	F	R	-	Inner Joint	601467
TESLA	MODEL X	ALL	2014-	-	AT	F/R	L/R	-	Outer Joint	801487
TESLA	MODEL X	ALL	2014-	-	AT	R	L/R	-	Drive Shaft	201699
TESLA	MODEL X	ALL	2014-	-	AT	R	L/R	-	Inner Joint	601466
TOYOTA	AURIS(HYBRID)	1.8 Hybrid (73 kW)	2010.06-	2012.09	CVT	F	L	Engine 2ZR-FXE	Drive Shaft	259639
TOYOTA	AURIS(HYBRID)	1.8 Hybrid (73 kW)	2010.06-	2012.09	CVT	F	R	Engine 2ZR-FXE	Drive Shaft	259640
TOYOTA	AURIS(HYBRID)	1.8 Hybrid (73 kW)	2010.06-	2012.09	CVT	F	L	Engine 2ZR-FXE	Inner Joint	659094
TOYOTA	AURIS(HYBRID)	1.8 Hybrid (73 kW)	2010.06-	2012.09	CVT	F	R	Engine 2ZR-FXE	Inner Joint	659095
TOYOTA	AURIS(HYBRID)	1.8 Hybrid (73 kW)	2010.06-	2012.09	CVT	F	L/R	Engine 2ZR-FXE	Outer Joint	859244
TOYOTA	AURIS(HYBRID)	1.8 Hybrid (73 kW)	2012.10-	-	CVT	F	L	Engine 2ZR-FXE	Drive Shaft	259673
TOYOTA	AURIS(HYBRID)	1.8 Hybrid (73 kW)	2012.10-	-	CVT	F	R	Engine 2ZR-FXE	Drive Shaft	259674
TOYOTA	AURIS(HYBRID)	1.8 Hybrid (73 kW)	2012.10-	-	CVT	F	L/R	Engine 2ZR-FXE	Outer Joint	859528
TOYOTA	PRIUS (_W1_)	1.5 Hybrid (53 kW)	2000.05-	2004.01	CVT	F	L	Engine 1NZ-FXE	Drive Shaft	259380
TOYOTA	PRIUS (_W1_)	1.5 Hybrid (53 kW)	2000.05-	2004.01	CVT	F	L	Engine 1NZ-FXE	Inner Joint	659077
TOYOTA	PRIUS (_W1_)	1.5 Hybrid (53 kW)	2000.05-	2004.01	CVT	F	L	Engine 1NZ-FXE	Outer Joint	859037
TOYOTA	PRIUS (_W2_)	1.5 Hybrid (57 kW)	2003.09-	2009.03	CVT	F	L	Engine 1NZ-FXE	Drive Shaft	259380
TOYOTA	PRIUS (_W2_)	1.5 Hybrid (57 kW)	2003.09-	2009.03	CVT	F	L	Engine 1NZ-FXE	Inner Joint	659077
TOYOTA	PRIUS (_W2_)	1.5 Hybrid (57 kW)	2003.09-	2009.03	CVT	F	L	Engine 1NZ-FXE	Outer Joint	859037
TOYOTA	PRIUS (_W3_)	1.8 Hybrid (73 kW)	2008.06-	-	CVT	F	L	Engine 2ZR-FXE	Drive Shaft	259377
TOYOTA	PRIUS (_W3_)	1.8 Hybrid (73 kW)	2008.06-	-	CVT	F	R	Engine 2ZR-FXE	Drive Shaft	259378
TOYOTA	PRIUS (_W3_)	1.8 Hybrid (73 kW)	2008.06-	-	CVT	F	L	Engine 2ZR-FXE	Inner Joint	659094
TOYOTA	PRIUS (_W3_)	1.8 Hybrid (73 kW)	2008.06-	-	CVT	F	R	Engine 2ZR-FXE	Inner Joint	659095
TOYOTA	PRIUS (_W3_)	1.8 Hybrid (73 kW)	2008.06-	-	CVT	F	L/R	Engine 2ZR-FXE	Outer Joint	859340
TOYOTA	PRIUS (_W5_)	1.8 Hybrid (72 kW)	2015.09-	-	CVT	F	L	Engine 2ZR-FXE	Drive Shaft	202319
TOYOTA	PRIUS (_W5_)	1.8 Hybrid (72 kW)	2015.09-	-	CVT	F	R	Engine 2ZR-FXE	Drive Shaft	202318
TOYOTA	PRIUS (_W5_)	1.8 Hybrid (72 kW)	2015.09-	-	CVT	F	L	Engine 2ZR-FXE	Inner Joint	659227
TOYOTA	PRIUS (_W5_)	1.8 Hybrid (72 kW)	2015.09-	-	CVT	F	R	Engine 2ZR-FXE	Inner Joint	659228
TOYOTA	PRIUS (_W5_)	1.8 Hybrid (72 kW)	2015.09-	-	CVT	F	L/R	Engine 2ZR-FXE	Outer Joint	859340
TOYOTA	RAV 4 IV (_A4_)	2.5 Hybrid (114 kW)	2015.10-	-	CVT	F	R	Engine 2AR-FXE	Drive Shaft	259685
TOYOTA	RAV 4 IV (_A4_)	2.5 Hybrid (114 kW)	2015.10-	-	CVT	F	R	Engine 2AR-FXE	Inner Joint	659206
TOYOTA	RAV 4 IV (_A4_)	2.5 Hybrid (114 kW)	2015.10-	-	CVT	F	R	Engine 2AR-FXE	Outer Joint	899320
TOYOTA	YARIS	1.5 Hybrid	2012.04-	-	CVT	F	L	Engine 1NZ-FXE	Drive Shaft	202320
TOYOTA	YARIS	1.5 Hybrid	2012.04-	-	CVT	F	R	Engine 1NZ-FXE	Drive Shaft	202435
TOYOTA	YARIS (HYBRID)	1.5 Hybrid	2012.04-	-	CVT	F	L	Engine 1NZ-FXE	Inner Joint	659077
TOYOTA	YARIS (HYBRID)	1.5 Hybrid	2012.04-	-	CVT	F	R	Engine 1NZ-FXE	Inner Joint	659236
TOYOTA	YARIS (HYBRID)	1.5 Hybrid	2012.04-	-	CVT	F	L/R	Engine 1NZ-FXE	Outer Joint	859270
VOLVO	V60 (155, 157)	2.4 D5 Hybrid (120 kW)	2015.03-	-	AT	F	L	AWD Engine D87PHEV	Drive Shaft	262125
VOLVO	V60 (155, 157)	2.4 D5 Hybrid (120 kW)	2015.03-	-	AT	F	R	AWD Engine D87PHEV	Drive Shaft	262123
VOLVO	V60 (155, 157)	2.4 D5 Hybrid (120 kW)	2015.03-	-	AT	F	L	AWD Engine D87PHEV	Inner Joint	662034
VOLVO	V60 (155, 157)	2.4 D5 Hybrid (120 kW)	2015.03-	-	AT	F	R	AWD Engine D87PHEV	Inner Joint	662066
VOLVO	V60 (155, 157)	2.4 D5 Hybrid (120 kW)	2015.03-	-	AT	F	L/R	AWD Engine D87PHEV	Outer Joint	862053
VOLVO	V60 (155, 157)	2.4 D5 Hybrid (120 kW)	2015.03-	-	AT	R	L/R	AWD Engine D87PHEV	Drive Shaft	201122
VOLVO	V60 (155, 157)	2.4 D5 Hybrid (120 kW)	2015.03-	-	AT	R	L/R	AWD Engine D87PHEV	Inner Joint	601057
VOLVO	V60 (155, 157)	2.4 D5 Hybrid (120 kW)	2015.03-	-	AT	R	L/R	AWD Engine D87PHEV	Outer Joint	801347



Manufacturer	Model	Displacement	From	To	Transm	F/R	L/R	Remarks	Product group	GSP No.
VOLVO	V60 (155, 157)	2.4 Hybrid D6 (158 kW)	2012.06-	2015.12	AT	F	L	AWD Engine D82PHEV	Drive Shaft	262125
VOLVO	V60 (155, 157)	2.4 Hybrid D6 (158 kW)	2012.06-	2015.12	AT	F	R	AWD Engine D82PHEV	Drive Shaft	262123
VOLVO	V60 (155, 157)	2.4 Hybrid D6 (158 kW)	2012.06-	2015.12	AT	F	L	AWD Engine D82PHEV	Inner Joint	662034
VOLVO	V60 (155, 157)	2.4 Hybrid D6 (158 kW)	2012.06-	2015.12	AT	F	R	AWD Engine D82PHEV	Inner Joint	662066
VOLVO	V60 (155, 157)	2.4 Hybrid D6 (158 kW)	2012.06-	2015.12	AT	F	L/R	AWD Engine D82PHEV	Outer Joint	862053
VOLVO	V60 (155, 157)	2.4 Hybrid D6 (158 kW)	2012.06-	2015.12	AT	R	L/R	AWD Engine D82PHEV	Drive Shaft	201122
VOLVO	V60 (155, 157)	2.4 Hybrid D6 (158 kW)	2012.06-	2015.12	AT	R	L/R	AWD Engine D82PHEV	Inner Joint	601057
VOLVO	V60 (155, 157)	2.4 Hybrid D6 (158 kW)	2012.06-	2015.12	AT	R	L/R	AWD Engine D82PHEV	Outer Joint	801347
VOLVO	V60 (155, 157)	D6 Hybrid (162 kW)	2015.03-	-	AT	F	L	AWD Engine D97PHEV	Drive Shaft	262125
VOLVO	V60 (155, 157)	D6 Hybrid (162 kW)	2015.03-	-	AT	F	R	AWD Engine D97PHEV	Drive Shaft	262123
VOLVO	V60 (155, 157)	D6 Hybrid (162 kW)	2015.03-	-	AT	F	L	AWD Engine D97PHEV	Inner Joint	662034
VOLVO	V60 (155, 157)	D6 Hybrid (162 kW)	2015.03-	-	AT	F	R	AWD Engine D97PHEV	Inner Joint	662066
VOLVO	V60 (155, 157)	D6 Hybrid (162 kW)	2015.03-	-	AT	F	L/R	AWD Engine D97PHEV	Outer Joint	862053
VOLVO	V60 (155, 157)	D6 Hybrid (162 kW)	2015.03-	-	AT	R	L/R	AWD Engine D97PHEV	Drive Shaft	201122
VOLVO	V60 (155, 157)	D6 Hybrid (162 kW)	2015.03-	-	AT	R	L/R	AWD Engine D97PHEV	Inner Joint	601057
VOLVO	V60 (155, 157)	D6 Hybrid (162 kW)	2015.03-	-	AT	R	L/R	AWD Engine D97PHEV	Outer Joint	801347
VW	GOLF VII (5G1, BQ1, BE1, BE2)	1.4 GTE Hybrid (110 kW)	2014.05-	-	AT	F	L	Engine CUKB	Drive Shaft	201985
VW	GOLF VII (5G1, BQ1, BE1, BE2)	1.4 GTE Hybrid (110 kW)	2014.05-	-	AT	F	L	Engine CUKB	Inner Joint	601158
VW	GOLF VII (5G1, BQ1, BE1, BE2)	1.4 GTE Hybrid (110 kW)	2014.05-	-	AT	F	L	Engine CUKB	Outer Joint	803101
VW	GOLF VII (5G1, BQ1, BE1, BE2)	e-Golf (85 kW)	2014.03-	2017.02	AT	F	R	Engine EAGA	Drive Shaft	201927
VW	GOLF VII (5G1, BQ1, BE1, BE2)	e-Golf (85 kW)	2014.03-	2017.02	AT	F	L	Engine EAGA	Inner Joint	661069
VW	GOLF VII (5G1, BQ1, BE1, BE2)	e-Golf (85 kW)	2014.03-	2017.02	AT	F	L	Engine EAGA	Outer Joint	803101
VW	TOUAREG (7P5, 7P6)	3.0 V6 TSI Hybrid (245 kW)	2010.04-	-	AT	F	L/R	AWD Engine CGEA, CGFA	Drive Shaft	235085
VW	TOUAREG (7P5, 7P6)	3.0 V6 TSI Hybrid (245 kW)	2010.04-	-	AT	F	L/R	AWD Engine CGEA, CGFA	Inner Joint	699148
VW	TOUAREG (7P5, 7P6)	3.0 V6 TSI Hybrid (245 kW)	2010.04-	-	AT	F	L/R	AWD Engine CGEA, CGFA	Outer Joint	835045
VW	TOUAREG (7P5, 7P6)	3.0 V6 TSI Hybrid (245 kW)	2010.04-	-	AT	R	L/R	AWD Engine CGEA, CGFA	Drive Shaft	261298
VW	TOUAREG (7P5, 7P6)	3.0 V6 TSI Hybrid (245 kW)	2010.04-	-	AT	R	L/R	AWD Engine CGEA, CGFA	Inner Joint	601160
VW	TOUAREG (7P5, 7P6)	3.0 V6 TSI Hybrid (245 kW)	2010.04-	-	AT	R	L/R	AWD Engine CGEA, CGFA	Inner Joint	601161
VW	TOUAREG (7P5, 7P6)	3.0 V6 TSI Hybrid (283 kW)	2010.09-	-	AT	F	L/R	AWD Engine CGEA, CGFA	Drive Shaft	235085
VW	TOUAREG (7P5, 7P6)	3.0 V6 TSI Hybrid (283 kW)	2010.09-	-	AT	F	L/R	AWD Engine CGEA, CGFA	Inner Joint	699148
VW	TOUAREG (7P5, 7P6)	3.0 V6 TSI Hybrid (283 kW)	2010.09-	-	AT	F	L/R	AWD Engine CGEA, CGFA	Outer Joint	835045
VW	TOUAREG (7P5, 7P6)	3.0 V6 TSI Hybrid (283 kW)	2010.09-	-	AT	R	L/R	AWD Engine CGEA, CGFA	Drive Shaft	261298
VW	TOUAREG (7P5, 7P6)	3.0 V6 TSI Hybrid (283 kW)	2010.09-	-	AT	R	L/R	AWD Engine CGEA, CGFA	Inner Joint	601160
VW	TOUAREG (7P5, 7P6)	3.0 V6 TSI Hybrid (283 kW)	2010.09-	-	AT	R	L/R	AWD Engine CGEA, CGFA	Inner Joint	601161

GSP No.	Car application	OE
201122	VOLVO	31367306
201122	VOLVO	36002063
201122	VOLVO	31367306AA
201123	RENAULT	396001350R
201167	KIA	49500D4300
201168	KIA	49501D4350
201529	AUDI	4G0407451AX
201529	AUDI	4G0407271A
201530	AUDI	4G0407271D
201530	AUDI	4G0407271F
201530	AUDI	4G0407451BX
201530	AUDI	4H0407451AX
201530	AUDI	4H0407451BX
201530	AUDI	8R0407271A
201530	AUDI	8R0407271C
201698	TESLA	103061500A
201699	TESLA	100771901A
201699	TESLA	100771900C
201700	TESLA	103061500B
201701	TESLA	103061600A
201702	TESLA	103061600B
201703	TESLA	103063200A
201785	MITSUBISHI	3815A523
201786	MITSUBISHI	3815A524
201927	VW/SEAT	5QE407272C
201929	MITSUBISHI	3715A207
201930	MITSUBISHI	3715A208
201985	AUDI/VW	5Q0407761TX
201985	AUDI/VW	5Q0407271CM
202135	HONDA	44306SNC000
202318	TOYOTA	4341047040
202319	TOYOTA	4342047040
202320	TOYOTA	434200D650
202320	TOYOTA	434200D411
202329	HYUNDAI	49500G2000
202330	HYUNDAI	49501G2000
202347	HONDA	44305SNC000
202435	TOYOTA	434100D660
202435	TOYOTA	434100D401
203382	VW	4H0407271K
205043	BMW	31607545126
205043	BMW	31607553946
205043	BMW	31608631750
205052	BMW	31607545125
205052	BMW	31607553945
205052	BMW	31608631751
205066	BMW	33207629301

GSP No.	Car application	OE
205066	BMW	33207624205
205066	BMW	33207597681
205066	BMW	33207597677
205066	BMW	33207622853
205066	BMW	33208680347
205067	BMW	33207629302
205067	BMW	33207597682
205067	BMW	33207597678
205067	BMW	33207624206
205067	BMW	33207622854
205067	BMW	33208680348
205114	BMW	33207581021
205114	BMW	33207614290
205115	BMW	33207614289
205115	BMW	33207581022
224496	HYUNDAI	49501C1250
224496	KIA	49501D4250
224497	HYUNDAI	49500C1200
224497	KIA	49500D4200
235085	AUDI	7P0407271BX
235085	AUDI	7P0407271AX
235085	AUDI	7P0407271CX
235085	AUDI/VW	7P0407271C
235085	AUDI/VW	7P0407271A
241493	NISSAN	391013NA0B
241494	NISSAN	391003NA0B
250614	RENAULT	391014031R
250616	HYUNDAI	8200647066
250616	RENAULT	391001665R
259377	TOYOTA	4342047030
259378	TOYOTA	4341047030
259380	TOYOTA	4342047020
259639	TOYOTA	4342012A60
259640	TOYOTA	4341012B30
259673	TOYOTA	4342002A60
259674	TOYOTA	4341002850
259685	TOYOTA	4341042280
261298	VW	7P0501201GX
261298	VW	7P0501201G
262123	VOLVO	36012423
262123	VOLVO	31367546
262125	VOLVO	36012416
262125	VOLVO	31367531
601057	VOLVO	31367306
601057	VOLVO	36002063
601057	VOLVO	31367306AA
601096	KIA	49582C5250

GSP No.	Car application	OE
601096	KIA	49582D4350
601158	AUDI/VW	8V0498103A
601160	VW	7P0598099
601160	VW	7P0598099X
601161	VW	7P0598103B
601465	TESLA	100771901A
601465	TESLA	100771900C
601466	TESLA	103061500A
601467	TESLA	103061600A
601511	MITSUBISHI	3817A273
601548	MITSUBISHI	3717A029
603022	VW	4H0498103AX
603022	VW	8K0498103DX
603022	VW	4H0498103A
603022	VW	8K0498103D
603022	AUDI	8K0407271Q
603022	AUDI	8R0407271C
603022	AUDI	4H0498103AV
603022	AUDI	G7W034PC
603022	AUDI	8K0498103
605014	BMW	31607545126
605014	BMW	31607553946
605014	BMW	31608631750
605020	BMW	33207629301
605020	BMW	33207629302
605020	BMW	33207624205
605020	BMW	33207597681
605020	BMW	33207597682
605020	BMW	33207598037
605020	BMW	33207598038
605020	BMW	33207568471
605020	BMW	33207597678
605020	BMW	33207624206
605020	BMW	33207622854
605020	BMW	33207598042
605020	BMW	33207598031
605020	BMW	33207598032
605020	BMW	33208680348
605030	BMW	31607545125
605030	BMW	31607553945
605030	BMW	31608631751
605038	BMW	33207629301
605038	BMW	33207624205
605038	BMW	33207597681
605038	BMW	33207597677
605038	BMW	33207622853
605038	BMW	33208680347

GSP No.	Car application	OE
605063	BMW	33207566074
605063	BMW	33207566075
605063	BMW	33207614492
605063	BMW	33207614493
605063	BMW	33207581017
605063	BMW	33207581018
605063	BMW	33207647027
605063	BMW	33207566087
605064	BMW	33207581021
605064	BMW	33207614290
605064	BMW	33207614289
605064	BMW	33207581022
623036	HONDA	44306SNC000
623059	HONDA	44305SNC000
624056	HYUNDAI	495823S201
624140	KIA	49582C5200
624140	KIA	49582D4300
624140	HYUNDAI	495822W600
624141	HYUNDAI/KIA	49582C1150
624141	KIA	49582D4150
641175	NISSAN	391013NA0B
641176	NISSAN	391003NA0B
650040	RENAULT	391014031R
650040	RENAULT	8200531904
650041	HYUNDAI	8200647066
650041	RENAULT	391001665R
659077	TOYOTA	430400D020
659077	TOYOTA	430400D010
659094	TOYOTA	4342047030
659095	TOYOTA	4341047030
659206	TOYOTA	4303058011
659227	TOYOTA	4304047030
659228	TOYOTA	4304047010
659236	TOYOTA	434030D170
661069	AUDI	5Q0407271H
661069	VW	7E0498103
661069	VW	7E0498103X
662034	VOLVO	36012416
662034	VOLVO	31367531
662066	VOLVO	36012423
662066	VOLVO	31367546
699148	PORSCHE	95534990200
699148	PORSCHE	95534990201
699148	VAG	7L0407331A
699148	VAG	7L0498103
699148	AUDI/VAG	7L0498103A
699148	VW	7L0498103AX



GSP No.	Car application	OE
699148	AUDI	19495343219
699148	AUDI	16870648
801064	KIA	49580D4300
801347	VOLVO	31367306
801347	VOLVO	36002063
801347	VOLVO	31367306AA
801487	TESLA	103061500A
801524	MITSUBISHI	3815A523
801524	MITSUBISHI	3815A524
803087	VAG	8K0407305F
803087	VAG	8K0498099C
803087	AUDI	8K0498099D
803087	VAG	8K0407305D
803087	VAG	8K0498099
803087	VAG	8K0498099X
803087	AUDI	8K0498099DX
803088	VAG	8K0407305E
803088	VAG	8K0498099A
803088	VAG	8K0498099AX
803101	AUDI	1K0498099G
803101	VW	5Q0407271H
803101	AUDI	1K0498099F
803101	AUDI	1K0498099M
803102	AUDI	8K0498099E
803102	AUDI	8K0498099EX
805006	BMW	31607545125
805006	BMW	31607545126
805006	BMW	31607545123
823066	HONDA	44306SNC000
823260	HONDA	44014TK6A51
824090	HYUNDAI	495002E250
824090	HYUNDAI	495002E500
824090	HYUNDAI	495002E550
824090	HYUNDAI	495012E400
824090	HYUNDAI	495072EE00
824090	HYUNDAI	495012E700
824090	KIA	495002E750
824090	HYUNDAI	495072EJ10
824090	HYUNDAI	495072EJ00
824299	HYUNDAI/KIA	49580C1050
824299	KIA	49580D4050
824299	HYUNDAI	49580D4000
835045	VAG	7P0407271CX
850150	RENAULT	8200934673
850150	RENAULT	8200934675
859037	TOYOTA	4341002240
859037	TOYOTA	4342002270

GSP No.	Car application	OE
859037	TOYOTA	4346009600
859037	TOYOTA	4346009601
859037	TOYOTA	4347009A14
859037	TOYOTA	4341005330
859037	TOYOTA	4347009Q30
859037	TOYOTA	4346009890
859037	TOYOTA	4347009A21
859037	TOYOTA	4347009N30
859244	TOYOTA	4347080318
859244	TOYOTA	4346009S20
859244	TOYOTA	4346080153
859244	TOYOTA	4347080134
859244	TOYOTA	4347080347
859244	TOYOTA	4347079016
859244	TOYOTA	4347079015
859244	TOYOTA	4342052250
859244	TOYOTA	4347080345
859244	TOYOTA	4347080360
859244	TOYOTA	4347009U41
859244	TOYOTA	4346080071
859244	TOYOTA	4347080317
859270	TOYOTA	4346009M60
859270	TOYOTA	4347009L30
859270	TOYOTA	4346009V60
859270	TOYOTA	434708Z044
859270	TOYOTA	4346009V00
859270	TOYOTA	434708Z012
859270	TOYOTA	4346009U50
859340	TOYOTA	4346049405
859340	TOYOTA	4347080267
859340	TOYOTA	4346049406
859528	TOYOTA	4341002850
862053	VOLVO	36012423
862053	VOLVO	31367546
899320	TOYOTA	4347049675
899320	TOYOTA	4347080352
899320	TOYOTA	4347049655
899320	TOYOTA	4341042280

**GSP Group Headquarters**

No.1 Gaoxiang Road, High-tech Industrial Zone  
Ouhai District, Wenzhou, China  
Tel: +86-577-86293118 / 86293268  
Fax: +86-577-86293313  
E-mail: [internationalsales@gsp.cn](mailto:internationalsales@gsp.cn)  
[www.gsp.cn](http://www.gsp.cn)

**GSP Nanjing Co., Ltd**

No.59 Shuanghu Road  
Gaochun District, Nanjing, China  
Tel: +86-25-56838033  
E-mail: [internationalsales@gsp.cn](mailto:internationalsales@gsp.cn)  
[www.gsp.cn](http://www.gsp.cn)

**GSP Europe GmbH**

Leyboldstraße 10  
D 50354 Hürth  
Tel: +49-2233-80-58-155  
Fax: +49-2233-80-58-156  
E-mail: [info@gsp-europe.com](mailto:info@gsp-europe.com)  
[www.gsp-europe.com](http://www.gsp-europe.com)

**GSP North America (West Coast)**

15315 Marquardt Ave.  
Santa Fe Springs, CA 90670  
Tel: +1-562-926-3525  
Fax: +1-562-376-8550  
Email: [tech@gsp-na.com](mailto:tech@gsp-na.com) / [info@gsp-na.com](mailto:info@gsp-na.com)  
[www.gspnorthamerica.com](http://www.gspnorthamerica.com)

**GSP North America (East Coast)**

2725 New Cut Road  
Spartanburg SC 29303  
Tel: +1-864-578-6900 / +1-800-243-7225  
Fax: +1-864-578-6978  
E-mail: [tech@gsp-na.com](mailto:tech@gsp-na.com) / [info@gsp-na.com](mailto:info@gsp-na.com)  
[www.gspnorthamerica.com](http://www.gspnorthamerica.com)

**GSP North America (Latin America)**

3150 SW 38th Ave. Suite 1312  
Coral Gables, FL 33146  
Tel: +1-305-446-7702 / +1-305-446-7703  
Fax: +1-305-446-7701  
Email: [info@gsplatinamerica.com](mailto:info@gsplatinamerica.com)  
[www.gsplatinamerica.com](http://www.gsplatinamerica.com)

